

## Build Your Own Dream Home

Ground Plus 2 Floors,  
4 Bed, covered area  
approx. 1700 Sq ft

LOW  
COST  
SCHEME

### ACCOMODATION

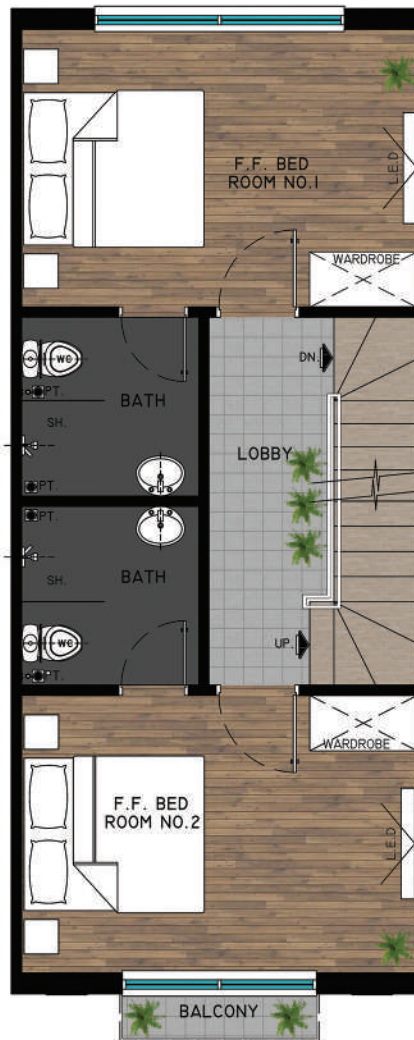
Ground Floor:  
Lounge, Kitchen, Dining,  
Powder Room, Stair Case,  
Store, Rear Passage

First Floor:  
2 Bedrooms with Attached Bath  
Balcony with one Room, Lobby

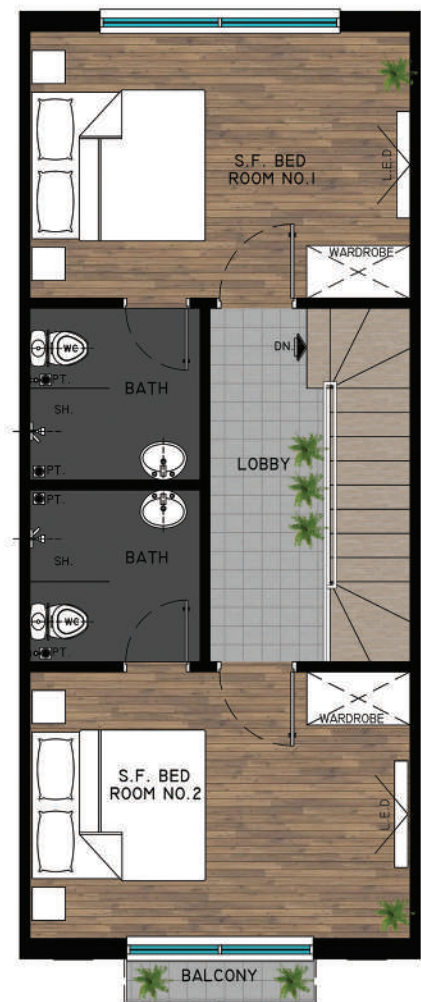
Second Floor:  
2 Bedrooms with Attached Bath  
Balcony with one Room, Lobby



GROUND FLOOR PLAN



FIRST FLOOR PLAN



SECOND FLOOR PLAN

Disclaimer: All plans, information and specifications contained herein are subject to changes and/or amendments as required by the relevant authorities or project planners and cannot form part of an offer or contract. While every reasonable care has been taken in providing this information, the developer or its agent cannot be held responsible for any inaccuracies. All illustrations are artist's impressions only.